

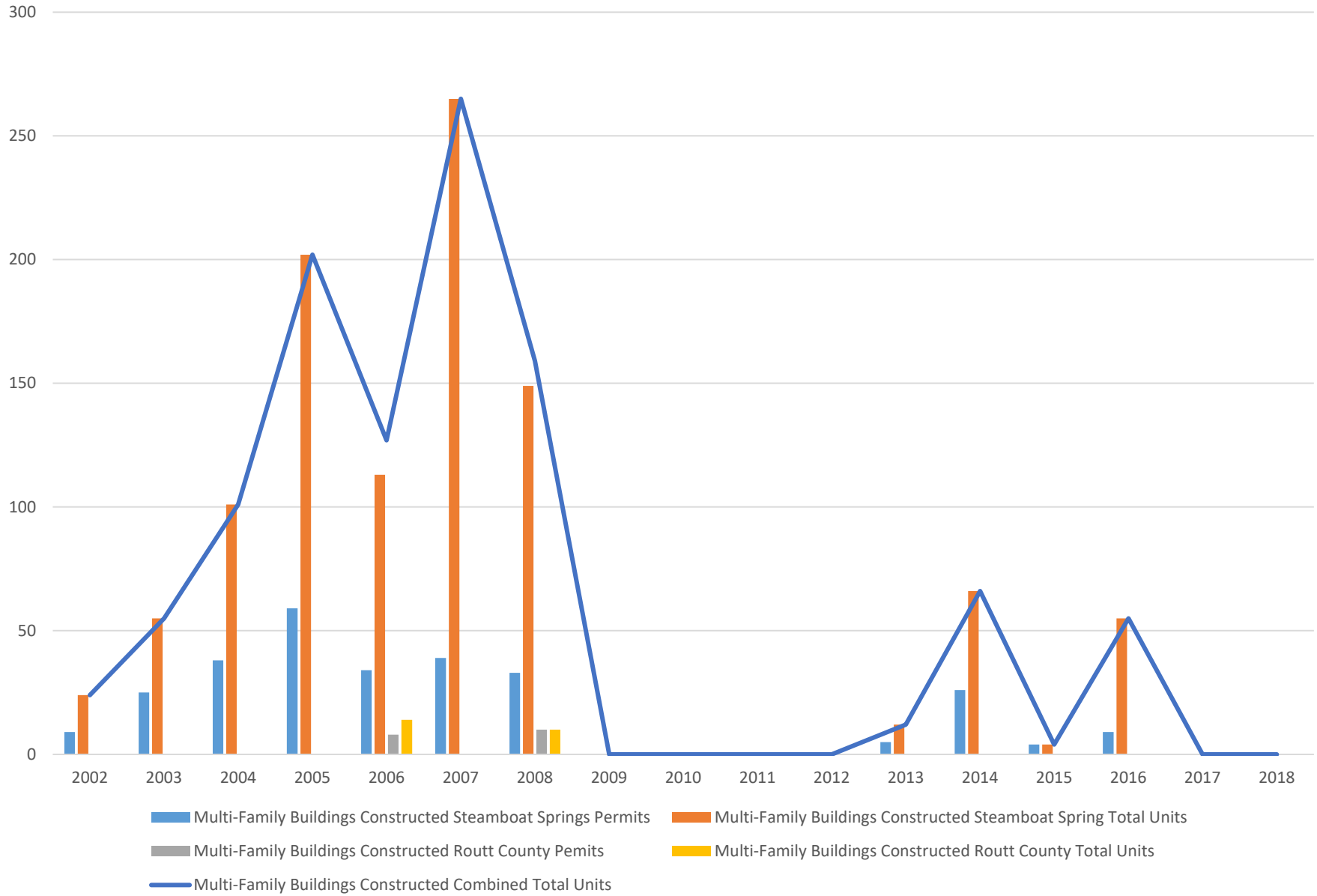
2018 Year End Reports

Multi-Family Buildings Constructed

Calendar Year	Steamboat Springs	Steamboat Spring	Routt County	Routt County	Combined
	Permits	Total Units	Pemits	Total Units	Total Units
2002	9	24	0	0	24
2003	25	55	0	0	55
2004	38	101	0	0	101
2005	59	202	0	0	202
2006	34	113	8	14	127
2007	39	265	0	0	265
2008	33	149	10	10	159
2009	0	0	0	0	0
2010	0	0	0	0	0
2011	0	0	0	0	0
2012	0	0	0	0	0
2013	5	12	0	0	12
2014	26	66	0	0	66
2015	4	4	0	0	4
2016	9	55	0	0	55
2017	0	0	0	0	0
2018	0	0	0	0	0

2018 Year End Reports

Multi-Family Buildings Constructed and Total Number of Dwelling Units



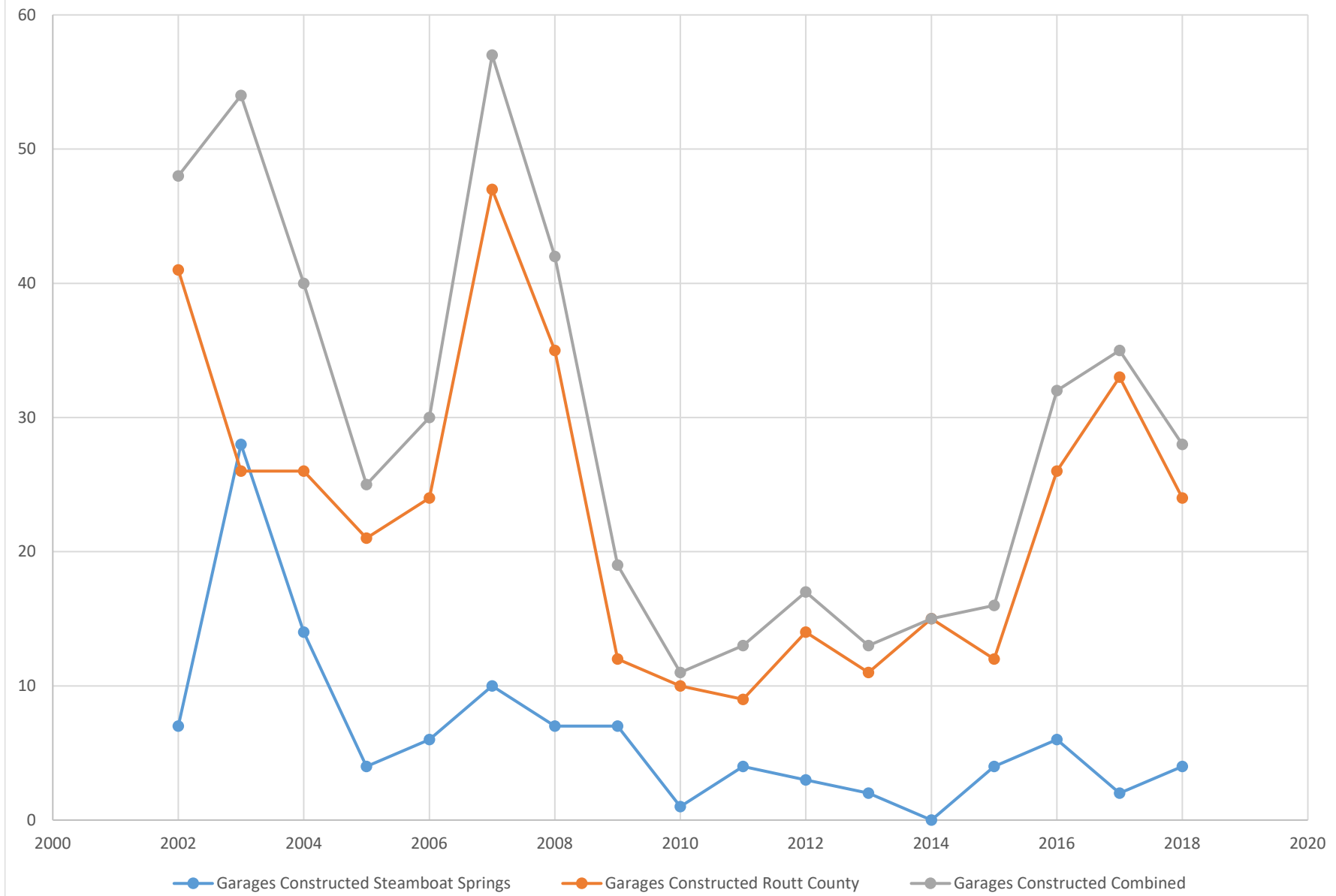
2018 Year End Reports

Garages Constructed

Calendar Year	Steamboat Springs	Routt County	Combined
2002	7	41	48
2003	28	26	54
2004	14	26	40
2005	4	21	25
2006	6	24	30
2007	10	47	57
2008	7	35	42
2009	7	12	19
2010	1	10	11
2011	4	9	13
2012	3	14	17
2013	2	11	13
2014	0	15	15
2015	4	12	16
2016	6	26	32
2017	2	33	35
2018	4	24	28

2018 Year End Reports

Garages Constructed



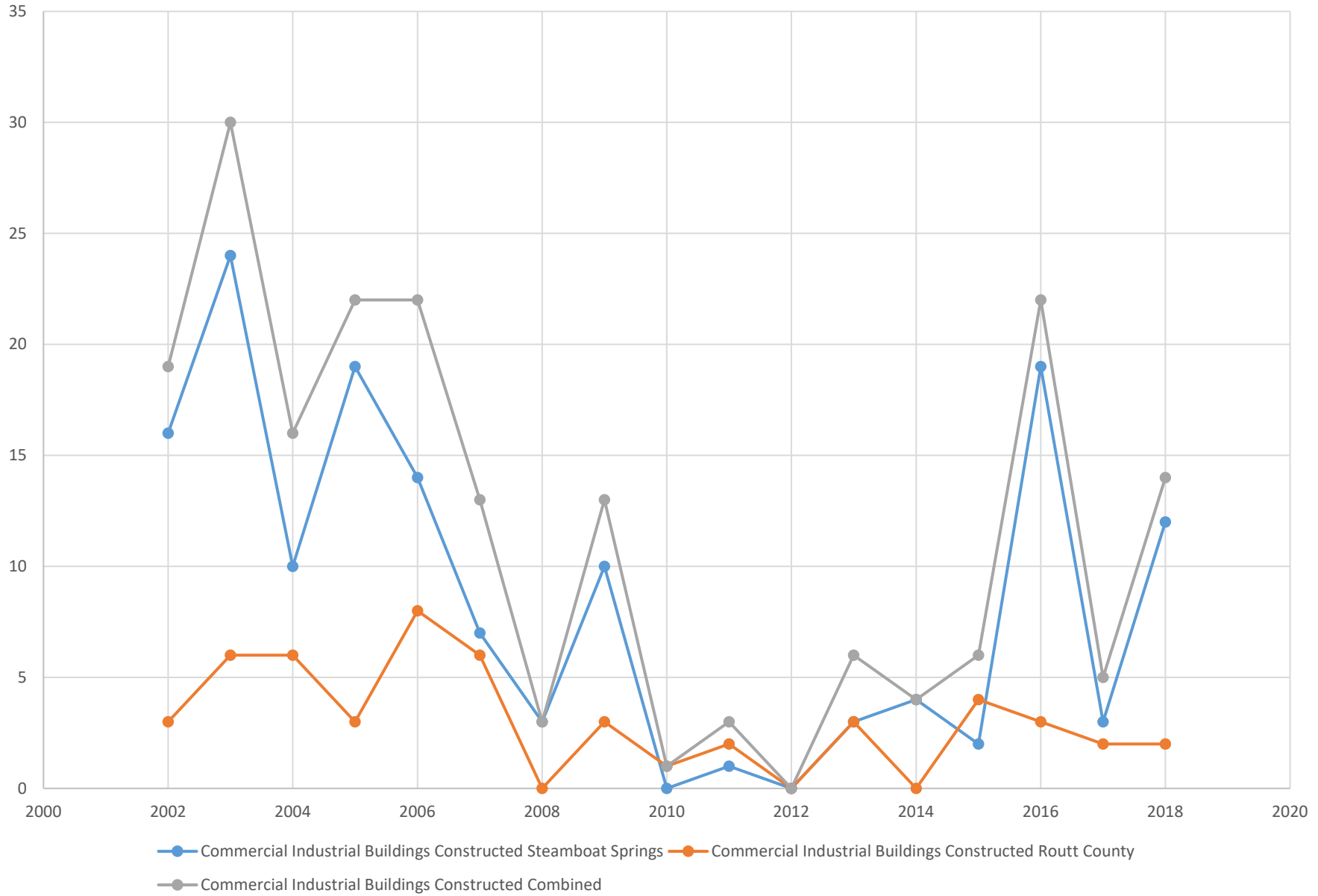
2018 Year End Reports

Commercial Industrial Buildings Constructed

Calendar Year	Steamboat Springs	Routt County	Combined
2002	16	3	19
2003	24	6	30
2004	10	6	16
2005	19	3	22
2006	14	8	22
2007	7	6	13
2008	3	0	3
2009	10	3	13
2010	0	1	1
2011	1	2	3
2012	0	0	0
2013	3	3	6
2014	4	0	4
2015	2	4	6
2016	19	3	22
2017	3	2	5
2018	12	2	14

2018 Year End Reports

Commercial Industrial Buildings Constructed



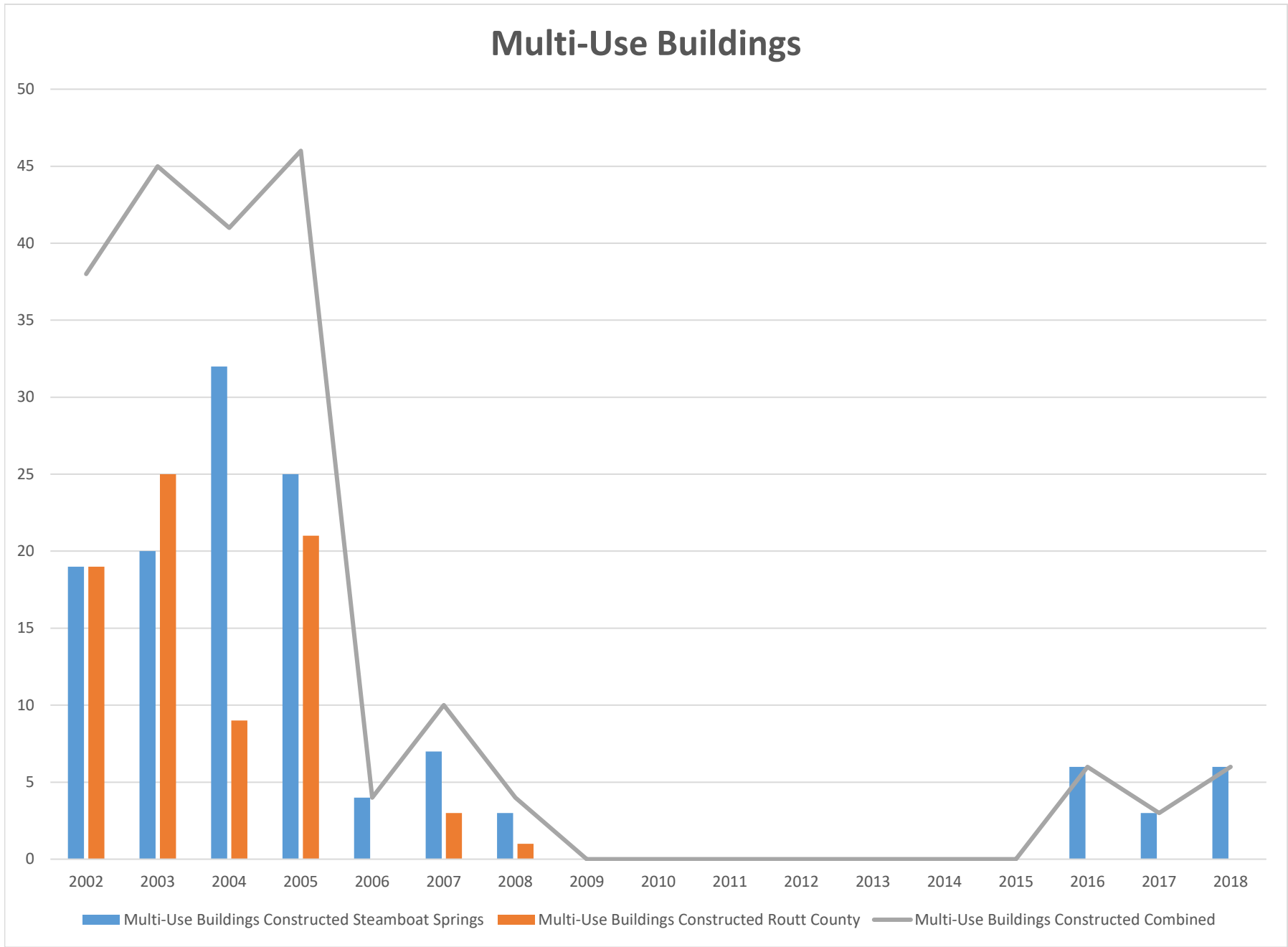
2018 Year End Reports

Multi-Use Buildings Constructed

Calendar Year	Steamboat Springs	Routt County	Combined
2002	19	19	38
2003	20	25	45
2004	32	9	41
2005	25	21	46
2006	4	0	4
2007	7	3	10
2008	3	1	4
2009	0	0	0
2010	0	0	0
2011	0	0	0
2012	0	0	0
2013	0	0	0
2014	0	0	0
2015	0	0	0
2016	6	0	6
2017	3	0	3
2018	6	0	6

2018 Year End Reports

Multi-Use Buildings



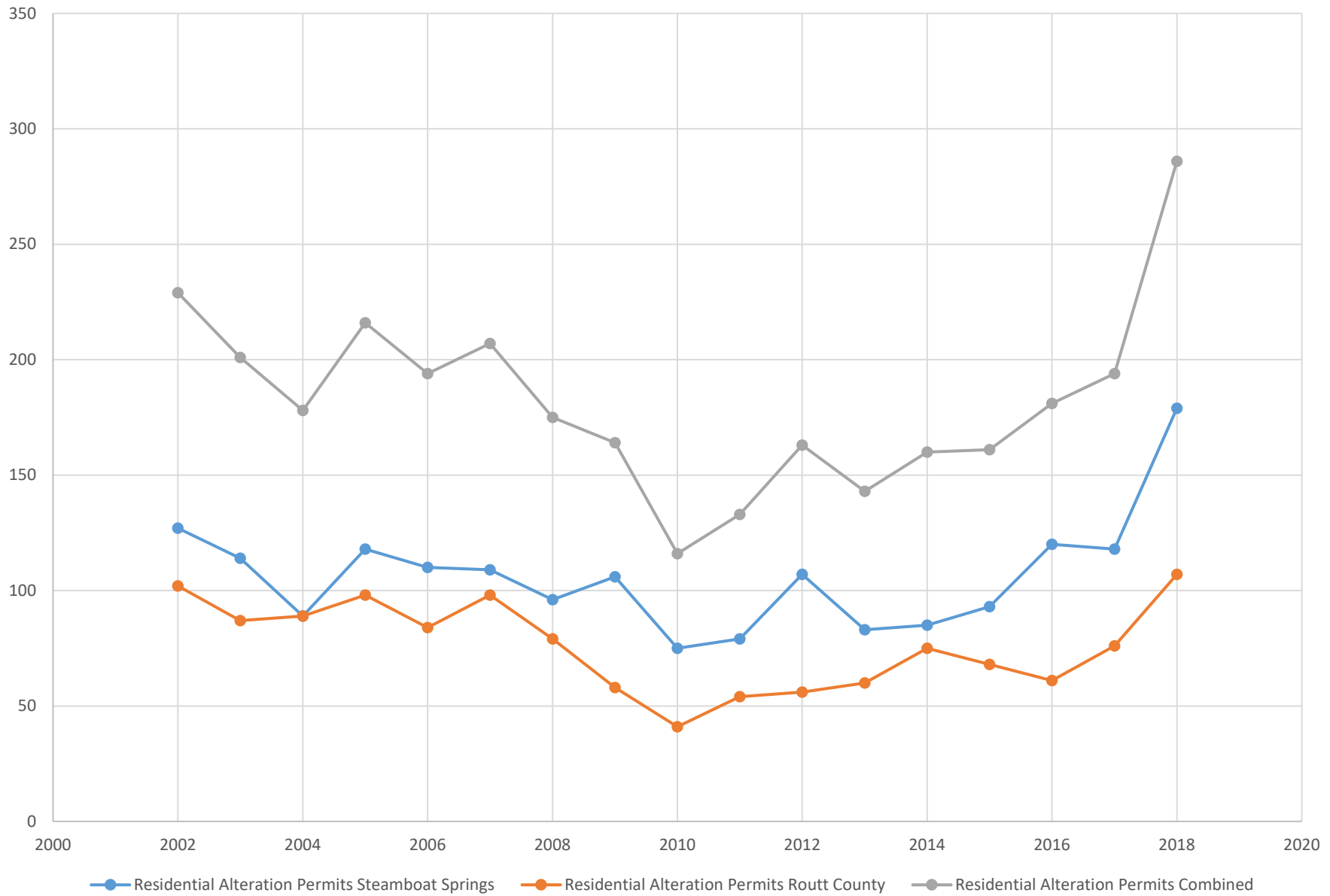
2018 Year End Reports

Residential Alteration Permits

Calendar Year	Steamboat Springs	Routt County	Combined
2002	127	102	229
2003	114	87	201
2004	89	89	178
2005	118	98	216
2006	110	84	194
2007	109	98	207
2008	96	79	175
2009	106	58	164
2010	75	41	116
2011	79	54	133
2012	107	56	163
2013	83	60	143
2014	85	75	160
2015	93	68	161
2016	120	61	181
2017	118	76	194
2018	179	107	286

2018 Year End Reports

Residential Alteration/Addition Permits



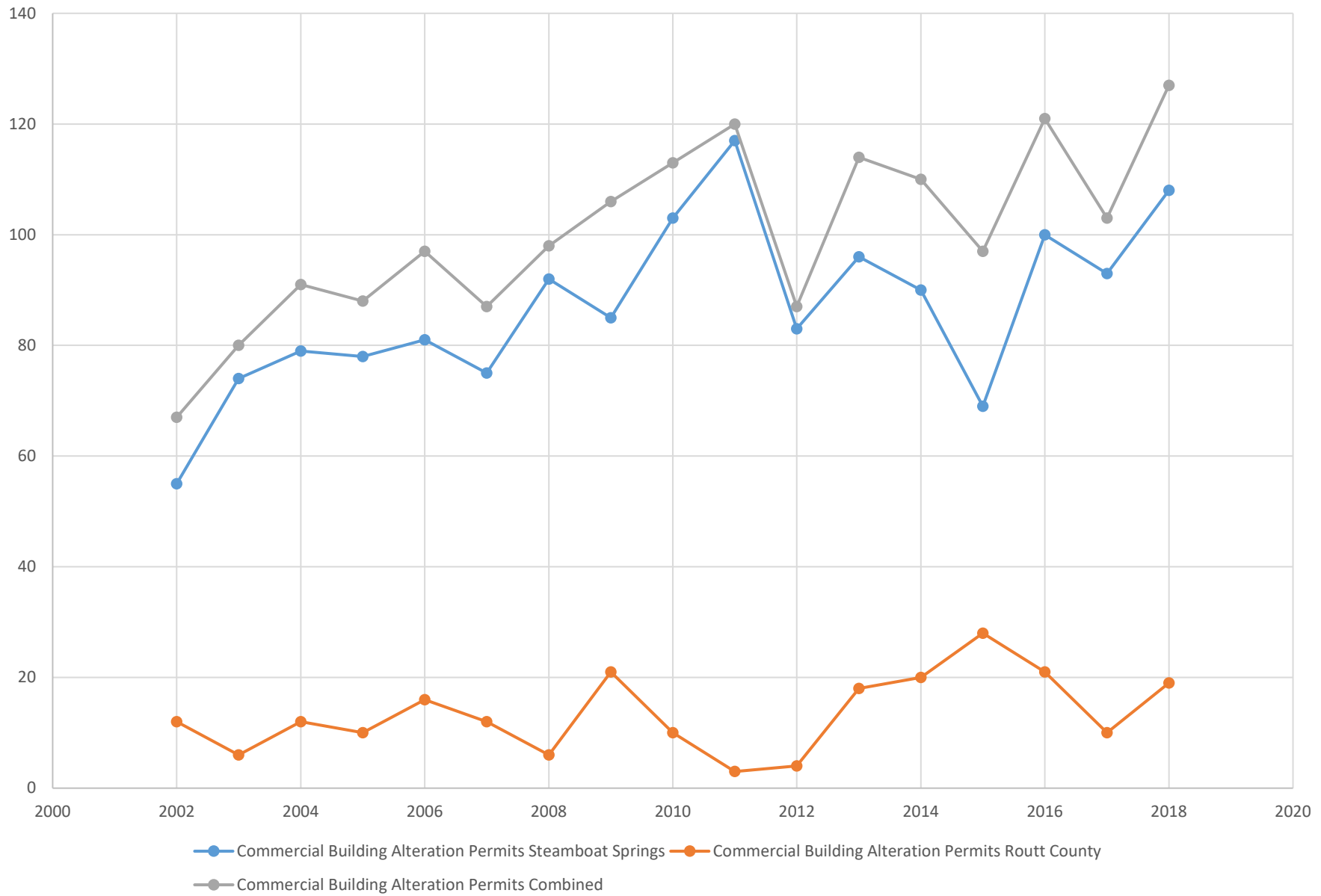
2018 Year End Reports

Commercial Building Alteration Permits

Calendar Year	Steamboat Springs	Routt County	Combined
2002	55	12	67
2003	74	6	80
2004	79	12	91
2005	78	10	88
2006	81	16	97
2007	75	12	87
2008	92	6	98
2009	85	21	106
2010	103	10	113
2011	117	3	120
2012	83	4	87
2013	96	18	114
2014	90	20	110
2015	69	28	97
2016	100	21	121
2017	93	10	103
2018	108	19	127

2018 Year End Reports

Commercial Buildings Alteration/Addition Permits



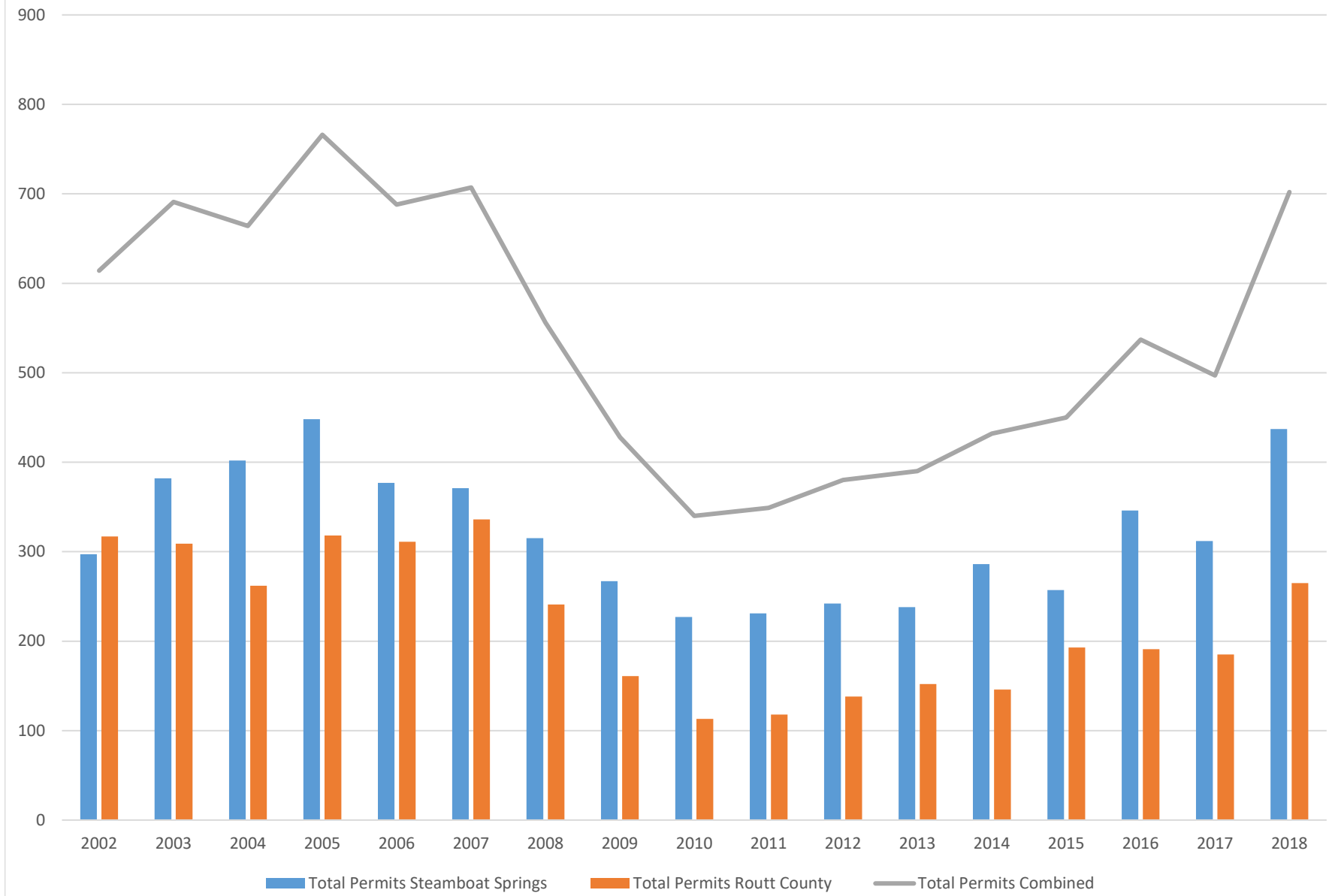
2018 Year End Reports

Total Buidling Permits

Calendar Year	Steamboat Springs	Routt County	Combined
2002	297	317	614
2003	382	309	691
2004	402	262	664
2005	448	318	766
2006	377	311	688
2007	371	336	707
2008	315	241	556
2009	267	161	428
2010	227	113	340
2011	231	118	349
2012	242	138	380
2013	238	152	390
2014	286	146	432
2015	257	193	450
2016	346	191	537
2017	312	185	497
2018	437	265	702

2018 Year End Reports

Total Building Permits Issued



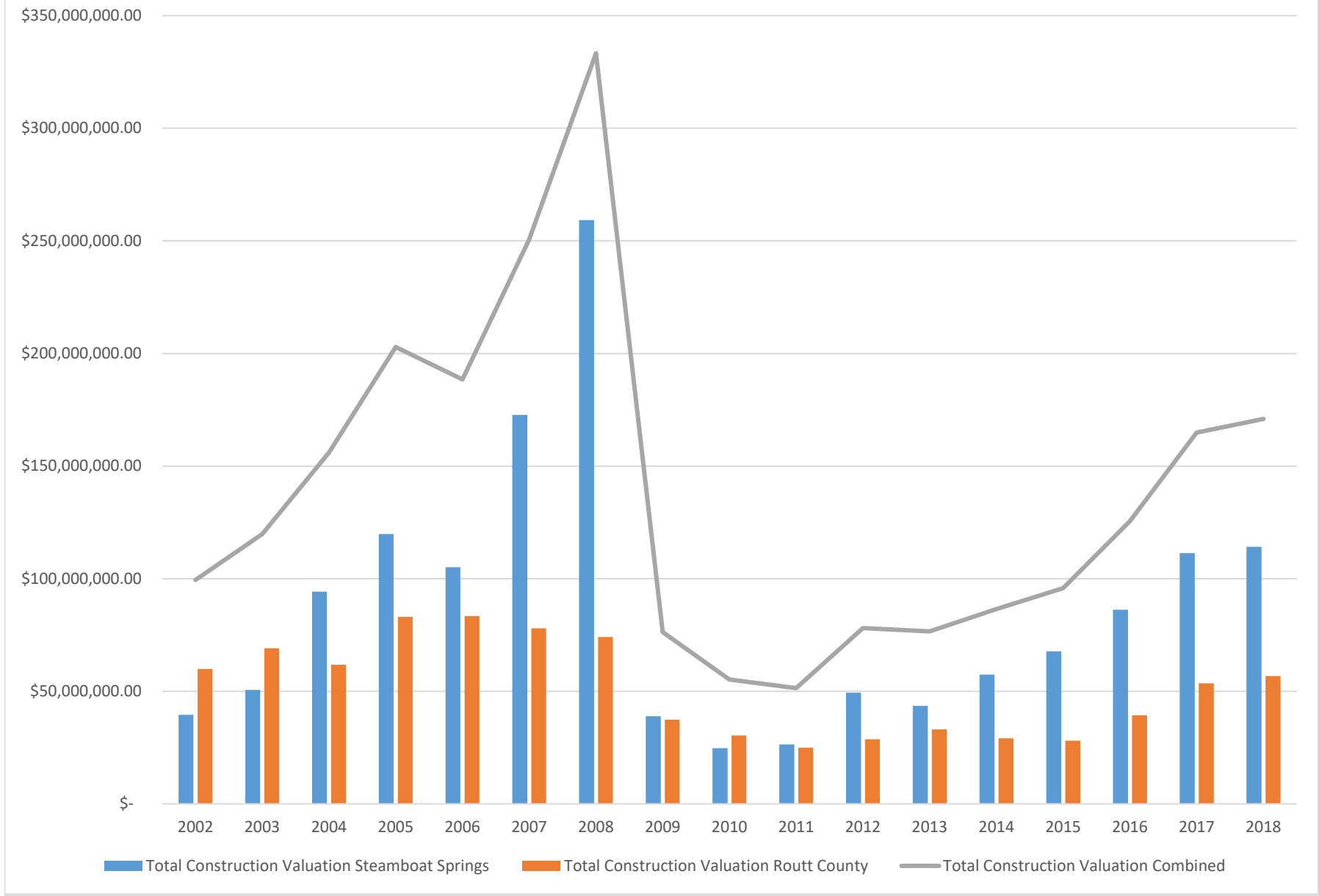
2018 Year End Reports

Total Construction Valuation

Calendar Year	Steamboat Springs	Routt County	Combined
2002	\$ 39,607,611.00	\$ 59,883,834.00	\$ 99,491,445.00
2003	\$ 50,658,078.00	\$ 69,124,751.00	\$ 119,782,829.00
2004	\$ 94,217,461.00	\$ 61,751,532.00	\$ 155,968,993.00
2005	\$ 119,814,358.00	\$ 83,060,398.00	\$ 202,874,756.00
2006	\$ 105,126,970.00	\$ 83,375,162.00	\$ 188,502,132.00
2007	\$ 172,755,975.00	\$ 77,933,579.00	\$ 250,689,554.00
2008	\$ 259,243,426.00	\$ 74,088,542.00	\$ 333,331,968.00
2009	\$ 38,968,904.00	\$ 37,363,926.00	\$ 76,332,830.00
2010	\$ 24,770,165.00	\$ 30,424,810.00	\$ 55,194,975.00
2011	\$ 26,452,326.00	\$ 24,970,508.00	\$ 51,422,834.00
2012	\$ 49,365,793.00	\$ 28,661,063.00	\$ 78,026,856.00
2013	\$ 43,508,728.00	\$ 33,111,210.00	\$ 76,619,938.00
2014	\$ 57,400,059.00	\$ 29,097,725.00	\$ 86,497,784.00
2015	\$ 67,688,880.00	\$ 28,081,604.00	\$ 95,770,484.00
2016	\$ 86,159,994.00	\$ 39,395,748.00	\$ 125,555,742.00
2017	\$ 111,372,401.00	\$ 53,501,431.00	\$ 164,873,832.00
2018	\$ 114,157,700.00	\$ 56,765,106.00	\$ 170,922,806.00

2018 Year End Reports

Total Construction Valuation



2018 Year End Reports

Total Permit Revenue

Calendar Year	Steamboat Springs	Routt County	Combined
2002	\$ 358,700.00	\$ 433,444.00	\$ 792,144.00
2003	\$ 371,457.00	\$ 501,949.00	\$ 873,406.00
2004	\$ 719,232.00	\$ 466,921.00	\$ 1,186,153.00
2005	\$ 800,910.00	\$ 620,555.00	\$ 1,421,465.00
2006	\$ 624,124.00	\$ 568,499.00	\$ 1,192,623.00
2007	\$ 839,147.00	\$ 517,174.00	\$ 1,356,321.00
2008	\$ 1,066,773.00	\$ 489,156.00	\$ 1,555,929.00
2009	\$ 291,638.00	\$ 254,407.00	\$ 546,045.00
2010	\$ 276,726.00	\$ 251,997.00	\$ 528,723.00
2011	\$ 281,780.00	\$ 266,884.00	\$ 548,664.00
2012	\$ 560,532.00	\$ 303,915.00	\$ 864,447.00
2013	\$ 431,004.00	\$ 314,917.00	\$ 745,921.00
2014	\$ 606,677.00	\$ 338,055.00	\$ 944,732.00
2015	\$ 606,673.00	\$ 368,128.00	\$ 974,801.00
2016	\$ 786,984.00	\$ 378,658.00	\$ 1,165,642.00
2017	\$ 901,393.00	\$ 456,791.00	\$ 1,358,184.00
2018	\$ 969,840.00	\$ 494,718.00	\$ 1,464,558.00

2018 Year End Reports

Total Permit Revenue

